

EARTHING

Coupling - for Threaded Copperbond Earth Rod

These Wallis couplings join lengths of threaded copperbond earth rods together. They facilitate deep driving and ensure continual contact between the rods, during and after driving.

The coupling also protects the rod threads while using the driving stud.

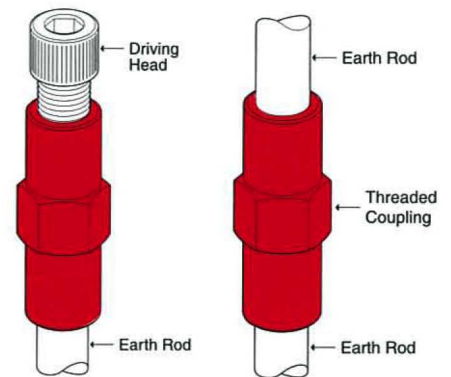
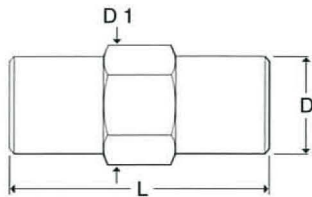
The coupling has a lead in for ease of assembly and a hex on the outside for grip and keeping the coupling tight when driving into the ground.

Wallis couplings have a high copper content ensuring excellent acid and corrosion resistance.

Thread Size	L	D	D1	Weight	Pack Qty	Part Number
1/2"	68	19	21	0.07	25	ERBO 12
5/8"	69	19	21	0.08	25	ERBO 16
3/4"	79	24	27	0.14	25	ERBO 20

Material:

Aluminium Bronze.



Driving Head - for Threaded Copperbond Earth Rod

These reusable Wallis driving heads are suitable for driving earth rods by hand or with a power hammer.

The driving head screws into the coupling to allow deep driving of the earth rods and protect the threads.

Thread Size	L	D	Weight	Pack Qty	Part Number
1/2"	50	19	0.07	25	ERBD 12
5/8"	54	22	0.08	25	ERBD 16
3/4"	62	25	0.13	25	ERBD 20

Material:

High Tensile Steel.

