

## LIGHTNING PROTECTION

### Air Rod Fixings

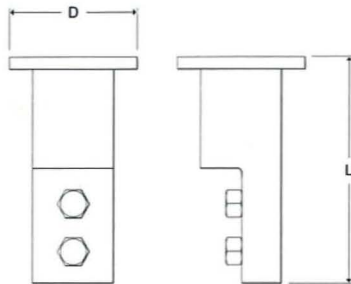
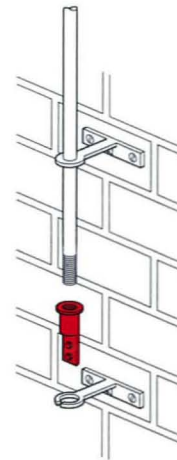
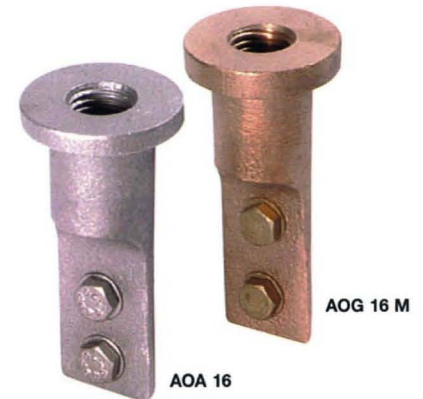
#### Rod to Tape Coupling

Used with the side mounting brackets or the building in holdfast this Wallis unit screws onto the air rod and connects to the tape with the fixing screws provided.

Thread Size	Type	L	D	Bolts	Weight	Pack Qty	Part Number
M16	Gunmetal	80	39	Brass	0.20	5	AOG 16 M
3/4"	Gunmetal	80	39	Brass	0.22	5	AOG 20
M16	Aluminium	80	S/Steel	0.01	5	AOA 16	

**Material:**

Body – Gunmetal or Aluminium.



### Air Rod Fixings

#### Building in Rod Holdfast

These Wallis fittings are inserted into the concrete courses between the bricks and fix the air termination to the side of the building or chimney.

This fixing method is mainly used where it is not possible to fit a saddle on the roof.

The rod to tape coupling is used in conjunction with the building in holdfast to secure the air terminal and connect to the tape.

Rod Type	Type	L	W	Weight	Pack Qty	Part Number
M16	Gunmetal	320	47	0.91	5	ABHG 16
M16	Aluminium	320	47	?	5	ABHA 16

**Material:**

Gunmetal or Aluminium.

